

PICTORIAL CME

Gallstone Pancreatitis and Extramedullary Paraspinal Hematopoiesis in Hb E/beta Thalassemia

Longjam Goldie¹, Wangda Kinzang², Gautam Thangjam³, Vaskarjeet Konsam⁴



Fig. 1: Chest x ray showing well-defined extra cardiac shadow

A 45 years old male with Hb E/beta thalassemia and past history of multiple blood transfusions presented with diffuse abdominal pain for 2 days. The physical examination revealed icterus, anemia and generalized tender abdomen with hypoactive bowel sounds. Laboratory studies showed hemoglobin of 8 gm/dl, elevated serum lipase 15000U/L (23-300) and amylase 1300U/L (30-110). Liver function test was deranged with total bilirubin of

10.8mg/dl, direct fraction comprising of 6.8mg/dl, SGOT 63 IU/L(17-46), SGPT 75 IU/L(13-69) and ALP 159U/L(38-129). Renal function test was normal. Abdominal ultrasound showed evidence of pancreatitis, cholelithiasis with mildly dilated CBD of 6mm and hepatosplenomegaly. The chest X-ray showed well circumscribed shadow behind the heart (Figure 1) and lobulated bilateral thoracic paraspinal mass extending from D8-12

¹Consultant Gastroenterologist, ²Post Graduate Student, ³Consultant Radiologist, ⁴Consultant Pathologist, Shija Hospitals and Research Institute, Manipur

Received: 30.09.2016; Accepted: 29.05.2018

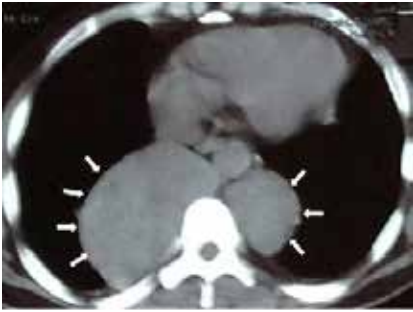


Fig. 2: CT thorax showing well circumscribed paraspinal mass

was seen on CECT thorax (Figure 2), from which FNAC was done. The histopathological report was consistent with extramedullary hematopoiesis (Figure 3). It is reported that paraspinal location for the hematopoietic tissue occurs in 11–15% of cases with EMH in thalassemia¹ and more than 80%

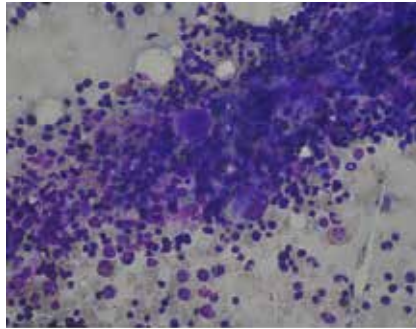


Fig. 3: Hypercellular smears of hematopoietic cells

of the cases remain asymptomatic² like in our case. MRCP ruled out choledocholithiasis (Figure 4). He was treated for mild acute biliary pancreatitis and was discharged after laparoscopic cholecystectomy.

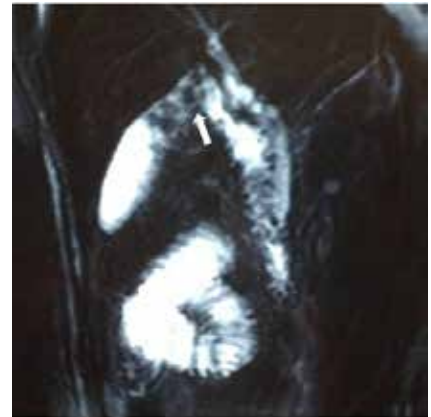


Fig. 4: MRCP showing cholelithiasis

References

1. Rachid Haidar, Hani Mhaidli, Taher AT. Paraspinal extramedullary hematopoiesis in patients with thalassemia intermedia. *Eur Spine J* 2010; 19:871–878.
2. Morteza Hassanzadeh. extramedullary hematopoiesis in thalassemia. *N Engl J Med* 2013; 396:1252.